



RS-003 Rotary Drum Screen

## Rotary Drum Screen

The rotary drum screen is a compact and convenient device, which can be operated to remove the suspended solids from the liquid stream. Raw wastewater is fed from the center inlet and the solids are retained on the screen mesh. The screened solids are then discharged from the outlet area and collected in a hopper. A fixed scraper can remove scum that sticks on the screen mesh surface along the screen rotation.

The drum screen mesh can be cleaned and washed automatically with its mechanical rotation. Compare to conventional shake or fixed screens, its "self-cleaning" feature has significantly reduced the wash water volume and footprint requirement.

### Purposes

Drum screen is used to remove coarse solids such as wood chips, fragments of cloth, metal filings, or fine solids such as gravels, hairs, saw dusts, grease, and kitchen waste.

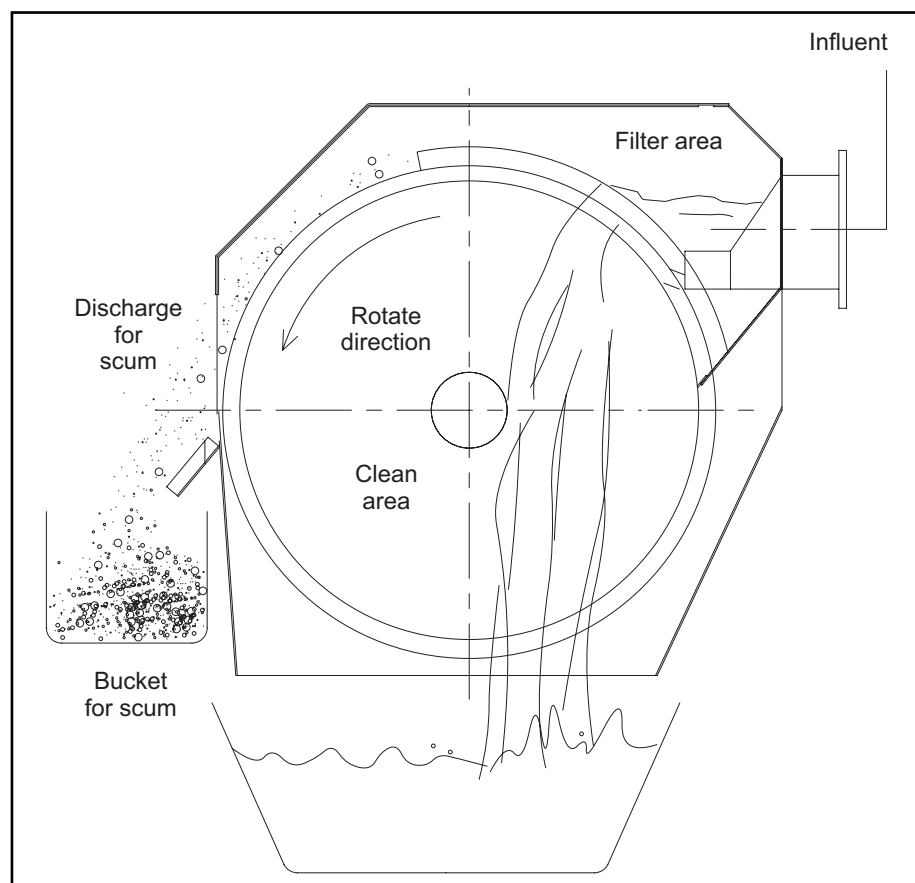
### Applications

- › Pulp and paper, slaughterhouses, food and beverage processing.
- › Municipal wastewater headwork preliminary treatment
- › Sludge thickening and solids separation.

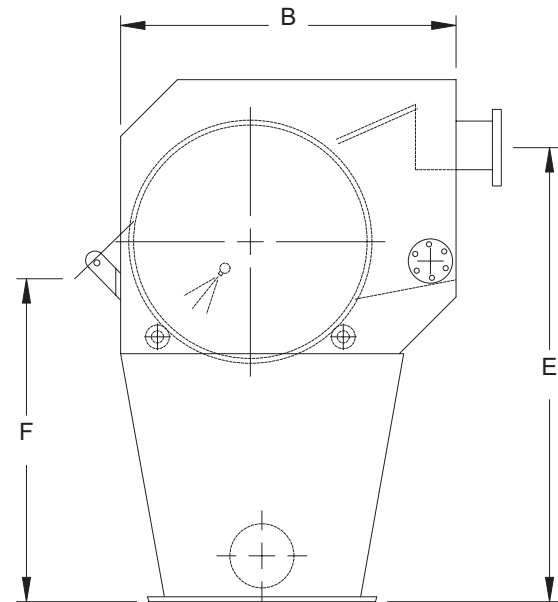
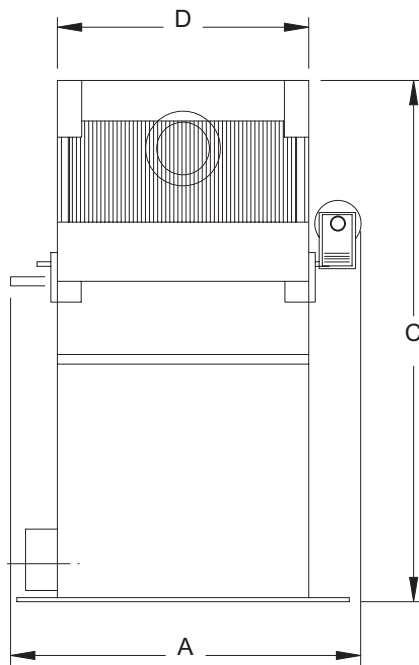
### Features

- › Effective screening to prevent clogging and wearing in the process
- › Small footprint requirement
- › Easy installation and operation.
- › Low power consumption with approximately 1/15 of the power required by conventional screens.
- › High process capacity and efficiency
- › Feasible for high temperature and high viscosity wastewater.
- › Optional brush wheel or high pressure washing are available.

## Equipment Process



## Equipment Drawings and Section Views



## Rotary Drum Screen

### Specifications

| Model              | R4545 | R4560 | R6030 | R6060 | R6090 |
|--------------------|-------|-------|-------|-------|-------|
| Drum Diameter (mm) | 450   | 450   | 600   | 600   | 600   |
| Drum Length (mm)   | 450   | 600   | 300   | 600   | 900   |
| A (mm)             | 700   | 720   | 500   | 1000  | 1300  |
| B (mm)             | 600   | 600   | 620   | 620   | 620   |
| C (mm)             | 600   | 600   | 1100  | 1100  | 1100  |
| D (mm)             | 500   | 620   | 320   | 620   | 920   |
| E (mm)             | 500   | 500   | 600   | 600   | 600   |
| F (mm)             | 300   | 300   | 500   | 500   | 500   |

\*Most Used Models

|       | Opening (mm)                               |      |     |      |     |     |
|-------|--|------|-----|------|-----|-----|
|       | 0.5  | 0.75 | 1.0 | 1.25 | 1.5 | 2   |
| Model | Capacity (m <sup>3</sup> /hr) (City Water) |      |     |      |     |     |
| R4545 | 10   | 20   | 25  | *27  | 30  | 36  |
| R4560 | 15   | 26   | 33  | *36  | 40  | 50  |
| R6030 | 40   | *55  | 75  | 81   | 90  | 110 |
| R6060 | 80   | *110 | 150 | 160  | 180 | 220 |
| R6090 | 120  | *165 | 225 | 240  | 270 | 330 |